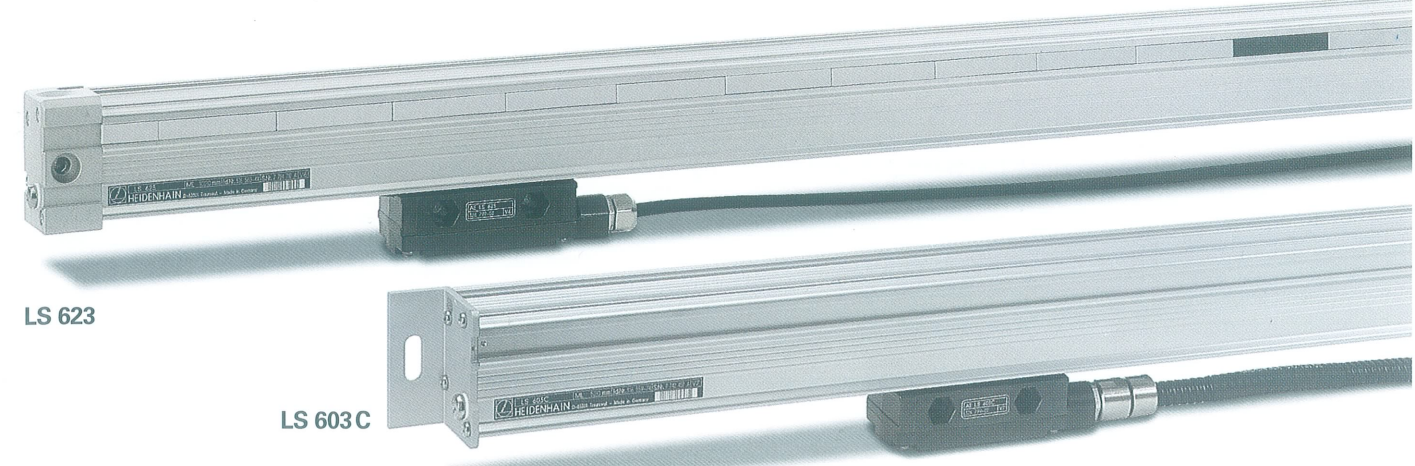


LS 603 LS 623

Incremental linear encoder for measuring steps of 10 µm and 5 µm (0.0005 in. and 0.0002 in.)



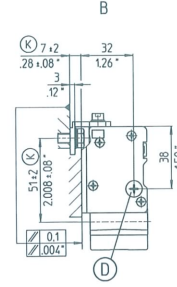
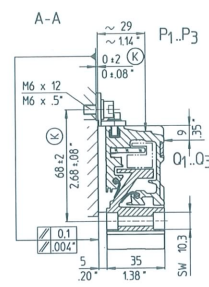
Specifications		LS 603 LS 623										
Measuring standard Grating period		Glass scale with DIADUR graduation 20 µm										
Accuracy grade		± 10 µm (± 0.0004 in.)										
Measuring length ML in mm inches		<table border="1"> <tr> <td>170, 220, 270, 320, 370, 420,</td> <td>6.7, 8.6, 10.6, 12.6, 14.5, 16.5,</td> </tr> <tr> <td>470, 520, 620, 720, 770, 820,</td> <td>18.5, 20.5, 24.4, 28, 30, 32,</td> </tr> <tr> <td>920, 1020, 1140, 1240, 1340, 1440,</td> <td>36, 40, 44, 48, 52, 56,</td> </tr> <tr> <td>1540, 1640, 1740, 1840, 2040, 2240,</td> <td>60, 64, 68, 72, 80, 88,</td> </tr> <tr> <td>2440, 2640, 2840, 3040</td> <td>96, 104, 112, 120</td> </tr> </table>	170, 220, 270, 320, 370, 420,	6.7, 8.6, 10.6, 12.6, 14.5, 16.5,	470, 520, 620, 720, 770, 820,	18.5, 20.5, 24.4, 28, 30, 32,	920, 1020, 1140, 1240, 1340, 1440,	36, 40, 44, 48, 52, 56,	1540, 1640, 1740, 1840, 2040, 2240,	60, 64, 68, 72, 80, 88,	2440, 2640, 2840, 3040	96, 104, 112, 120
170, 220, 270, 320, 370, 420,	6.7, 8.6, 10.6, 12.6, 14.5, 16.5,											
470, 520, 620, 720, 770, 820,	18.5, 20.5, 24.4, 28, 30, 32,											
920, 1020, 1140, 1240, 1340, 1440,	36, 40, 44, 48, 52, 56,											
1540, 1640, 1740, 1840, 2040, 2240,	60, 64, 68, 72, 80, 88,											
2440, 2640, 2840, 3040	96, 104, 112, 120											
Reference marks	LS 6x3	Standard: One reference mark at midpoint Special versions: Several reference marks at 50 mm (2 in.) intervals starting from midpoint of measuring length; or one reference mark at any desired position										
	LS 6x3C	Distance-coded, absolute position value available after max. 20 mm traverse										
Max. traversing speed		60 m/min (2362 ipm)										
Vibration (55 to 2000 Hz)		30 m/s ² (IEC 68-2-6)										
Shock (11 ms)		200 m/s ² (IEC 68-2-27)										
Required moving force		≤ 10 N										
Protection (EN 60529 or IEC 529)		IP 53 when installed as per instructions IP 64 with compressed air										
Operating temperature		0 to 50 °C (32 to 122 °F)										
Weight		0.7 kg + 2 kg/m measuring length										
Power supply	LS 603 LS 623	5 V ± 5 % / < 100 mA 5 V ± 5 % / < 170 mA (with no load)										
Output signals/ Signal period	LS 603 LS 623	~ 11 µA _{app} / 20 µm □ TTL / 20 µm										
Electrical connection		Sep. adapter cable (1 m/3 m/6 m) with or without armor										
Cable length to subsequent electronics	LS 603 LS 623	30 m (98.5 ft) max. 50 m (164 ft) max.										

Dimensions

in mm/inches

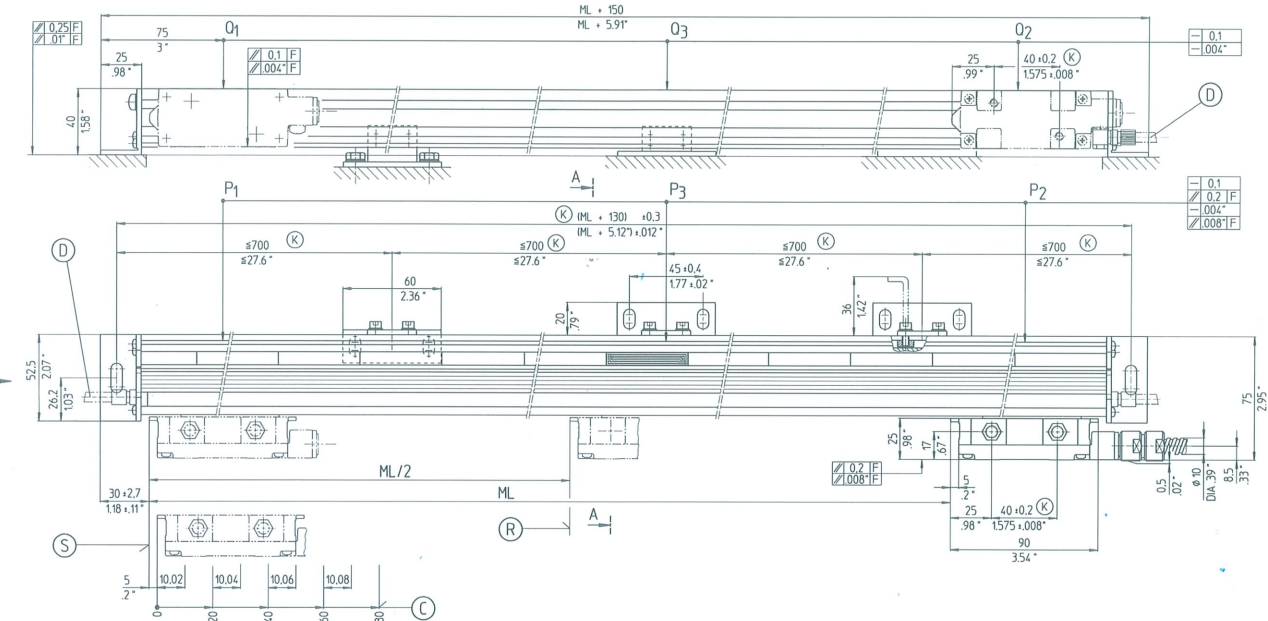


DIN ISO 8015
ISO 2768 - m H



- Ⓛ, Ⓧ, Ⓨ = Mounting options LS 603
- Ⓛ, Ⓧ, Ⓨ = Mounting options LS 623
- F = Machine guideway
- P, Q = Gauging points for alignment
- Ⓚ = Required mating dimensions
- Ⓛ = Compressed air inlet
- Ⓜ = Reference mark position LS 6x3
- Ⓝ = Reference mark position LS 6x3C
- Ⓟ = Beginning of measuring length

LS 603



LS 623

